

PIBEC: PACIFIC ISLANDER BIOSPECIMEN EDUCATION AND COLLECTION PROJECT

What is the PIBEC Project?

The Pacific Islander Biospecimen Education and Collection (PIBEC) Project aimed to develop culturally-tailored education materials for Pacific Islander adults. These materials describe what biospecimens are, how they are studied in research, and why the research is important in improving health outcomes for Pacific Islanders.

After viewing the educational materials, participants of the project were given an opportunity to take part in an optional second study during which they could donate a saliva sample. This sample will be housed safely in a biorepository until members of a Pacific Islander advisory committee agreed to use the sample on research that would benefit Pacific Islander health.

Why is the project important?

Pacific Islanders in the U.S. have high rates of cancer, cardiovascular disease, diabetes, and substance use compared with other racial and ethnic groups.

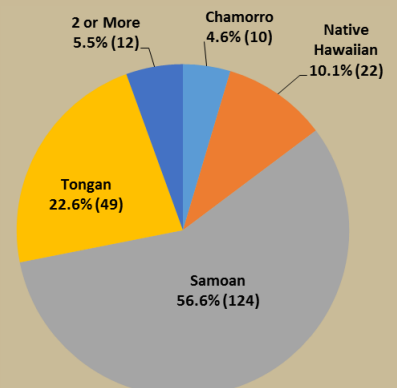
Pacific Islanders are also less likely than other groups to donate their biospecimens for genetic and other biomedical studies, which presents a significant barrier to cancer and other disease-related research.

Given the advances in genetic research in the identification, prevention, and treatment of diseases, the development of educational approaches to improve knowledge about biospecimen donation among Pacific Islanders is significant.

Who took part in the project?

With the help of several collaborating Pacific Islander community-based organizations in Southern California, a total of 219 Pacific Islander adults were recruited to review the PIBEC educational materials. Of the participants, 36% were men and 64% were women, the median age was 34, and ethnicities are shown below.

PIBEC Participants by Ethnicity % (N)



PIBEC FINDINGS: BY THE NUMBERS

EVALUATION OF EDUCATIONAL MATERIALS



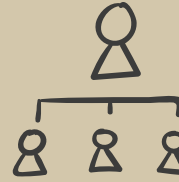
95%

FOUND THE VIDEO TO
BE INFORMATIVE



98%

SAID MATERIALS WERE
EASY TO FOLLOW AND
UNDERSTAND



97%

AGREED THAT THE NHPI
THEME HELPED TO KEEP
THEM ENGAGED



89%

SAID MATERIALS
INCREASED THEIR
OVERALL KNOWLEDGE

PIBEC DONATION

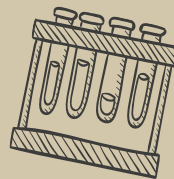
WHAT TYPES OF SAMPLES WERE
PARTICIPANTS WILLING TO PROVIDE?

91% WOULD PROVIDE A SALIVA SAMPLE

45% WOULD PROVIDE A URINE SAMPLE

48% WOULD PROVIDE A BLOOD SAMPLE

28% WOULD PROVIDE A TOENAIL SAMPLE



WE ASKED PARTICIPANTS TO
RATE THEIR DONATION EXPERIENCE:

92% FELT THAT THE DONATION PROCESS
WENT SMOOTHLY

90% FELT COMFORTABLE WITH THE SALIVA
DONATION PROCEDURE

94% FELT TRUSTFUL OF THE STAFF AND
RESEARCH TEAM

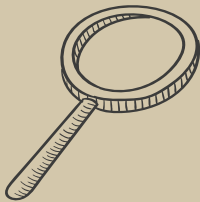


OF THOSE WHO DONATED A SAMPLE:

72% WANT TO HELP THEIR COMMUNITY

42% HAD A FAMILY HISTORY OF CANCER

24% HAVE FRIENDS LIVING WITH CANCER



WHAT DOES THIS MEAN FOR THE FUTURE?

TAILORED BIOSPECIMEN EDUCATION MATERIALS CAN
HELP TO BETTER INFORM THE PACIFIC ISLANDER
COMMUNITY TO MAKE BETTER DECISIONS ON
DONATIONS OF GENETIC SAMPLES FOR RESEARCH.



97.7%

THAT'S 214 OF 219
PARTICIPANTS WHO
DONATED A
SALIVA SAMPLE

